

CCHD Screening Newsletter 2016-2

November 18, 2016

NSO's Recommendations for Pulse Oximetry (PO) Screening for CCHD

The Newborn Screening Ontario CCHD screening team has been working with a paediatric physician group and midwifery task force to finalize best practice recommendations for CCHD screening by PO in Ontario. We have also initiated a hospital task force to consult on equipment procurement, early discharge management, and other CCHD screening logistics. **Here are some highlights** from the CCHD screening recommendations.

Who will be offered PO screening for CCHD in Ontario?

- **Healthy infants**, ideally between 24 and 48 hours of age, will be offered PO screening for CCHD.
- **Infants in the NICU/PICU/SCN who are discharged home before 7 days of age** will be offered PO screening for CCHD during their hospitalization when appropriate (no respiratory distress or cardiac symptoms) or at the time of discharge.
- Infants who have a prenatal diagnosis of a congenital heart disease (CHD) or have been diagnosed during their initial 24 hours with a CHD will not undergo a CCHD PO screen.

Who will be performing the screen?

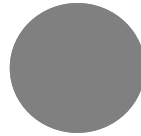
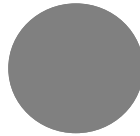
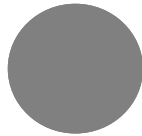
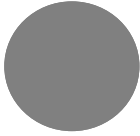
- **Health care professionals**, including nurses and midwives, involved in the care of newborns will be responsible for:
 - Performing the CCHD PO screen.
 - Providing parents with the necessary information about CCHD screening.
 - Documenting declines, deferrals, or screening results in the patient record and on the CCHD portion of the modified dried blood spot card.
 - Providing urgent follow-up in the case of a screen positive result.

What is the NSO recommended algorithm for PO screening for CCHD?

- Oxygen saturation levels in the right hand and in either foot are measured consecutively and compared.
- ***Please see the algorithm for CCHD screening at the end of this newsletter.***

Where will the screening results be documented?

- The results should be documented in your organization's patient medical record and on the CCHD **portion of the modified dried blood spot card**. These modified cards will be available for the February 2017 launch date.
- CCHD screening results will be sent to NSO with the patient's dried blood spot card.



CCHD Screening Newsletter 2016-2

When should the screen be done?

- The **optimal window** for PO screening for CCHD is when the infant is **between 24 and 48 hours of age, the earlier during that time frame, the better.**

How will screen positive results be managed?

- In hospital:
 - The Most Responsible Practitioner will be notified of a screen positive result.
 - An **urgent referral** will be made to a physician for further investigation.
- In an out-of-hospital setting:
 - An **urgent consultation to a physician for assessment** will be made.
 - The usual referral protocol as appropriate per clinical picture will be followed.
- More details on the recommended screen positive work-up will be covered in a future newsletter - stay tuned!

When will the NSO CCHD screening program begin?

- The NSO CCHD screening program will be launching at **select sites in February 2017**, and will be **phased in at other sites throughout the year**. Our goal is for all newborns in Ontario to have access to PO screening for CCHD by the end of 2017.

In Other Canadian CCHD Screening News...

The Canadian Cardiology Society and Canadian Paediatric Cardiology Association recently released a **Position Statement on Pulse Oximetry Screening in Newborns to Enhance Detection of Critical Congenital Heart Disease** in the Canadian Journal of Cardiology. Visit the Canadian Cardiovascular Society page to review it: www.ccs.ca. The Position Statement outlines how pulse oximetry screening can be used to enhance the detection of CCHD, and recommendations for a best practice in Canada.

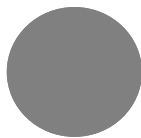
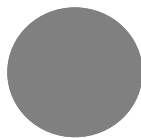
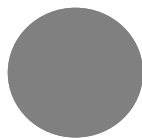
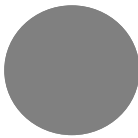
Coming Up in the Next CCHD Screening Newsletter

- How NSO will help you get your program started
- Responsibilities in the NSO CCHD PO screening program

Thank you for your continued support for the NSO CCHD screening program!

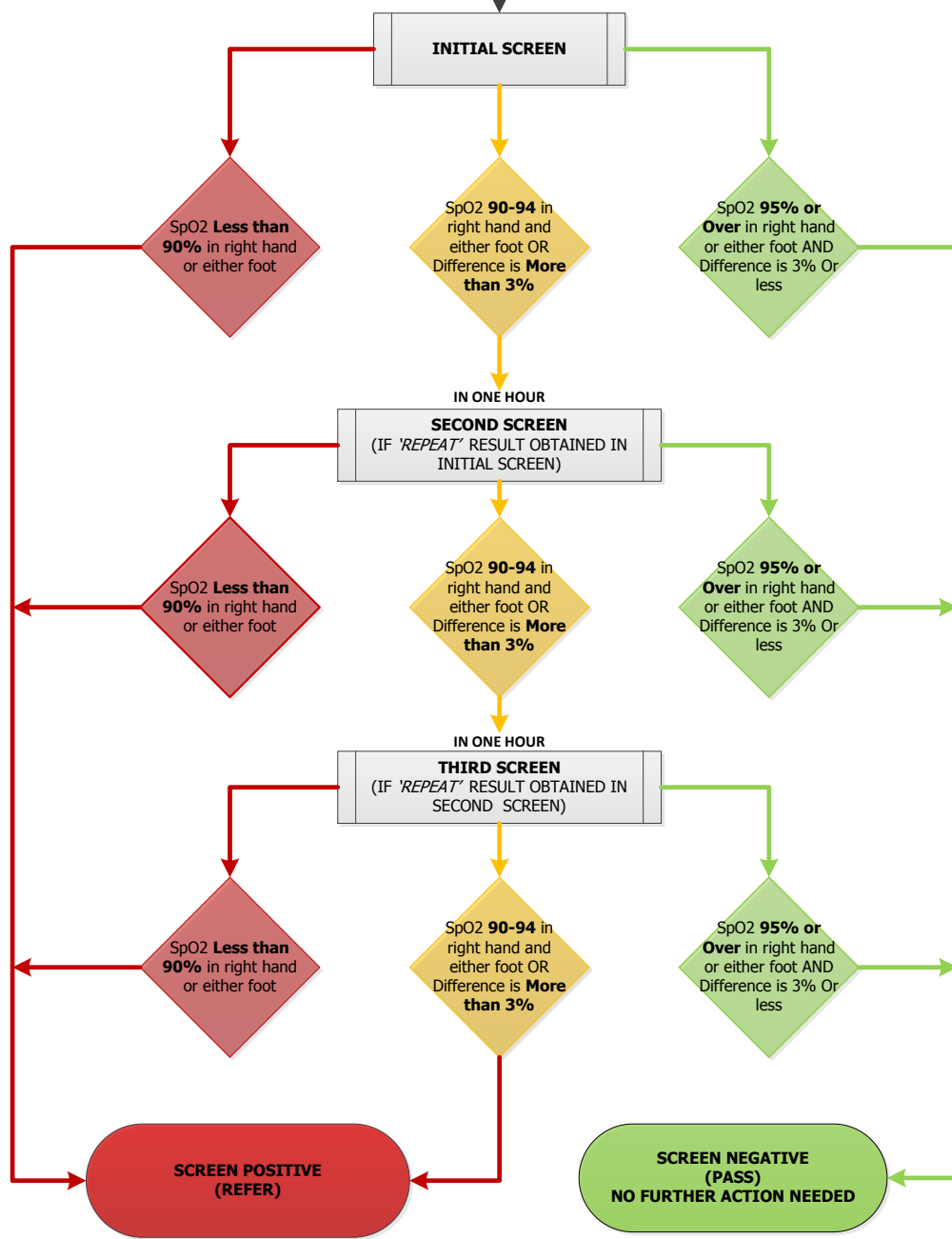
Newborn Screening Ontario, CCHD Screening Implementation Team

For more information or to be added to the distribution list for email updates NSOCCHD@cheo.on.ca



NSO adapted CCHD Algorithm

Completed on well baby at 24-48 hours of age or before discharge if less than 7 days old



Document on DBS card appropriately and forward to Newborn Screening Ontario