



Infant Stool Colour Card

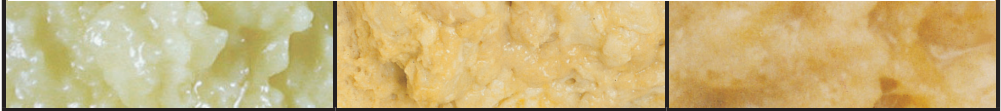
ሕብራዊ ካርድ ድካ ሕጻናት

ABNORMAL: Pale Stool Colours

ዘይንቡር ሕብሪ ሰገራ.

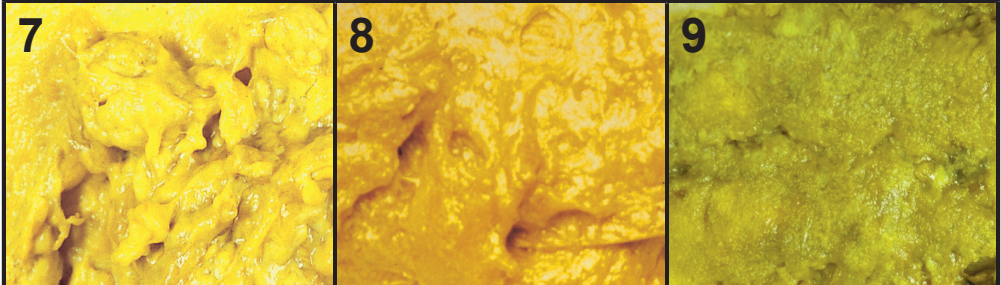


Consult the physical version of this card for greater colour accuracy.
ዝያዳ ልክዕነት ምእንቲ ኺህልወኩም ነቲ ግሉዝ ሕታም እዛ ካርድ እዚኣ ኣማኸሩዎ።



NORMAL Stool Colours

ልሙድ ሕብርታት ድካ



INSTRUCTIONS

መምርሒታት

Check your baby's stool (poop) colour every day for the first month after birth to screen for biliary atresia.

ኣብታ ኹብ እትውለድ-ዲ ድሕሪ ምውላድኩም ዝነበረት ቀዳመይቲ ወርሒ ኣብ ነፍሲ ወከፍ መዓልቲ ንሕብሪ ድካ ውሉድካ ርአዩዎ።

If your baby has an abnormal stool colour (see above colours 1,2,3,4,5,6), please contact Newborn Screening Ontario by phone or email or by scanning the QR code below.

ውሉድካ ዘይልሙድ ሕብርታት ድካ እንተ ኣልይዎ (ኣብ ልዕሊ ሕብርታት 1,2,3,4,5,6 ርአዩዎ) በጃኹም ምስ ናጽላ ምርመራ (ኒውቡርን ስክሪንን) ኣንታርዮ ብተሌፎን ብኢ-መይል ወይ ነቲ ኣብ ታሕቲ ዘሎ ኮድ QR ስካን ብምግባር ተራኸቡ።

Phone / ተሌፎን : **1-833-POOP-CHK**
(1-833-766-7245)

Online / ኣብ መስመር : www.newbornscreening.on.ca/poop

Email / ኢ-መይል : NSOBA@cheo.on.ca





When identification and treatment start early, babies with biliary atresia can have a better chance to grow and develop normally.

What is biliary atresia?

Biliary atresia (BA) is a rare but serious disease where bile cannot get from the liver to the stool (poop). Babies with BA usually seem well but they can develop **pale yellow or whitish coloured stools** in the first month of life. Along with the pale poop, these babies can have yellow skin and eyes (**jaundice**) **lasting longer than the first two weeks of life**. Without treatment, babies with BA will develop life-threatening liver damage. Treatment is most effective when babies are identified before they are one month old.

How can you screen for biliary atresia?

You can screen for BA by comparing your baby's stool (poop) colour to the numbered pictures on the front of this card, for the first month after birth. Screening for abnormal stool colour can help to identify problems with the liver earlier. Keep this card close by when you change your baby's diaper.

Who do I contact and when?

If at any time during the screening you notice that your baby has an abnormal stool colour (number 1,2,3,4,5, or 6), please contact Newborn Screening Ontario using the information on the front of this card.

Please have available the baby's name, birth date, and health card number. If you also choose to see your doctor, please take this card with you.

What happens next?

First, don't be alarmed. This is a screening tool and not a diagnostic test. A clinical team member from Newborn Screening Ontario will return your call by the next business day to discuss your concern and begin next steps. Your privacy and health information is protected. Learn more: www.newbornscreening.on.ca/privacy

If you have concerns about your baby **other than stool colour**, please contact your health care provider. For more information about biliary atresia, visit our website or scan the QR code on the front of the card.

Information is available in other languages. / ኣብፊታ ብኸልእ ቋንቋታት እውን ይርከብ እዩ ::
www.newbornscreening.on.ca/poopcard

ኣቐዲሙ ኸርከብ ኸሎን፤ ኣቐዲሙ ሕክምና ኸጅመር ኸሎ፤ ቢልሪያ ኣፊሲያ ዘለዎም ሕጻናት ንቡር ዕቤት ንኺገብሩን ንኺዓብዩን ዝሓሸ ኣጋጣሚ ኺረኸቡ ይኸእሉ እዮም።

ቢልሪያ ኣትረሲያ እንታይ እዩ?

ቢልሪያ ኣትረሲያ (BA) ካብ ጸላም ከብቢ ናብ ድኣ ኺኣቱ ዘይከእል ሳሕቲ ዜጋጥም ግናኸ ኸቢድ ሕግም እዩ። BA ዘለዎም ሕጻናት መብዛሕትኦ ግዜ ደሓን ዝመስሉ እኳ እንተኹን ኣብታ ቐዳመይቲ ወርሒ ግን ጨላይ ብጫ ወይ ድመቕ ዝሕብሩ ድኳታት ኪህልዎም ይኸእል እዩ። እዞም ሕጻናት እዚኣቶም ምስቲ ድመቕ ሕንዚ ዋራይ ዘይኩነስ ካብተን ናይ መጀመርታ ኸልተ ሰሙን ንላዕሊ ብጫ ቁርቢትን ኣዲንትን (ጃንዲስ) ኪህልዎም ይኸእል እዩ። BA ዘለዎም ሕጻናት ሕክምና እንተ ዘይተገይሩሎም ንይወቶም ኣብ ሓደጋ ዜኣቱ ጉዳይት ጸላም ከብዲ ኺሕድሩ እዮም። ሕጻናት ደቂ ሓደ ወርሒ ቐድሚ ምጅናም እንተተፈለጡ ሕክምና ኣዝዩ ውጽኢታዊ እዩ።

ናይ ቢልሪያ ኣትረሲያ ብኸመይ ከትርይዎ ትኸእሉ?

ናይ ቢልሪያ ኣትረሲያ ንምርእይ ኣብታ ድሕሪ ሕርሲ ዘላ ቐዳመይቲ ወርሒ፣ ድኳ ሕጻንኩም (ሕቕፊ) ምስቲ ኣብ ቅድሚት እዛ ካርድ እዚላ ዘሎ ቐድሚታት ዘለዎ ስእልታት ኣነጻጽሩ። ዘይልሙድ ሕብርታት ድኳ እንተ ድኳ መርግጥኹም ጸላም ከብዲ ኣቐዲምኩም ጸገማት ከም ዘሎ ንምፍላጥ ከሕግዞ ይኸእል እዩ። ዓለባ ውሉድኩም ኸትቅይሩ ከለኹም ነዛ ካርድ እዚላ ኣጽኒዕኩም ሓዙዎ።

ምስ መንን መዓስን እዩ ዝረኸብ ?

ኣብ ዝኹን ይኹን ኣዋን ውሉድኩም ዘይልሙድ ሕብርታት ድኳ ኸም ዘለዎ (ቐጻሪ 1,2,3,4,5 ወይ 6) እንተ ኣስተብሂልኩም በጃኹም ነቲ ኣብ ቅድሚት እዛ ካርድ እዚላ ዘሎ ሓበሬታ ተጠቐምኩም ምስ ናጽላ ስክሪንግ ኣንታርቶ ተራኸቡ።

ስም እቲ ሕጻን ዕለት ልደት ከምኡውን ቐጻሪ ካርድ ጥዕና ኣብ ቀረባ ሓዙዎ። ናብ ሓኪምኩም ኸከትኩዎ እንተ መሪጽኩም በጃኹም ነዛ ካርድ እዚላ ምሳኸም ውሳዔዎ።

ቀጺሉ እንታይ እዩ ዚኸውን ?

ፈለግ ኣይትሰንቡዎ። እዚ ናይ ምርመራ መሳርሒ ደኣ እምበር ናይ ምርመራ ፈተና ኣይኩነን። ኣብ ናጽላ ስክሪንግ ኣንታርቶ ዚከብር ኣባል ጉጅለ ሕክምና ኣብ ዚቐጽል መገልጻይ ስራሕ ካባኹም ተመሊሱ ብዛዕባ ሻቕሎትኩም ኺመያየጥን ዚቐጽል ስጉምታት ኪጅምርን እዩ። ናይ ብሕተኻን ናይ ጥዕና ሓበሬታኻን ዕቕብ ይኹኑኩም። ዝያዳ ተምሃር: www.newbornscreening.on.ca/privacy

ብዛዕባ ሕጻንኩም ኹብ ሕብር ድኳ ሓለፉ ኸልእ ዘተሓሳስኩምኩም እንተ ኹይኩ በጃኹም ምስ ኣላዩ ኸንክን ጥዕናኹም ተራኸቡ። ብዛዕባ ቢልሪያ ኣፊሲያ ዝያዳ ሓበሬታ እንተ ደለኹም ኣብ ውበ ሳይትና ርእይ ወይ ከእ ነቲ ኣብ ቅድሚት እታ ካርድ ዘሎ ኮድ QR ስካን ግበሩሉ።

We thank

Health Promotion Administration, Ministry of Health and Welfare, Taiwan, and Professor Mei-Hwei Chang, National Taiwan University, College of Medicine for authorizing the use of stool colour photos. / ሕብራዊ ስእልታት ድኳ ኸተጥቀሙ ስለ ዝፈቐድኩምልና ነግግዎኩም።

For permission to use any content on this card, please contact NSO. ኣብዛ ካርድ እዚላ ዘሎ ትሕዝቶ ኸተጥቀሙ ፍቓድ ኣንተ ደለኹም በጃኹም ምስ NSO ተራኸቡ